

Description

As an accessory for C-9314P Passive Remote Indicator, BP-9314P Back Plate is used to connect C-9314P with a back box when embedded mounting is adopted.

Mounting

Size and holes of BP-9314P Back Plate are shown in Fig.1. There are four screw holes in the back plate. Among, hole 1 and 2 are used to install the plate and the back box. Hole 3 and 4 are used to assembly the plate and C-9314P passive remote indicator.

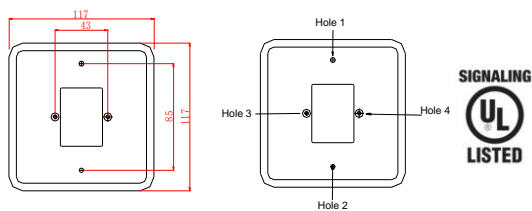


Fig. 1

Mounting is followed by steps below.

- 1) Install BP-9314P back plate on the back box with screws.
- 2) Removing the top cover of C-9314P passive remote indicator, fix C-9314P passive remote indicator on the BP-9314P back plate with screws.
- 3) Connect the cable of C-9314P passive remote indicator and replace its top cover.

Mounting is shown in Fig. 2 and 3.

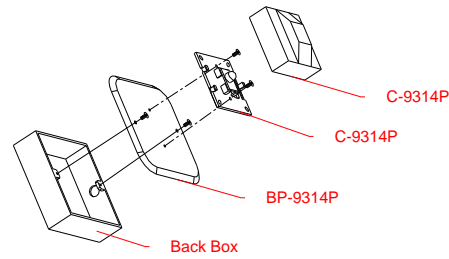


Fig. 2

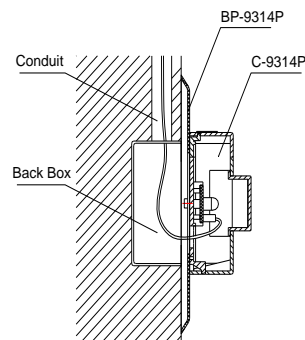


Fig. 3

Refer to C-9314P Passive Remote Indicator Installation and Operation Manual for its mounting.

Limited Warranty

GST warrants that the product will be free of charge for repairing or replacing from defects in design, materials and workmanship during the warranty period. This warranty does not cover any product that is found to have been improperly installed or used in any way not in accordance with the instructions supplied with the product. Anybody, including the agents, distributors or employees, is not in the position to amend the contents of this warranty. Please contact your local distributor for products not covered by this warranty.

This Data Sheet is subject to change without notice. Please contact GST for more information or questions.

Gulf Security Technology Co., Ltd.

No. 80, Changjiang East Road, QETDZ, Qinhuangdao, Hebei, P. R. China 066004

Tel: +86 (0) 335 8502434 Fax: +86 (0) 335 8502532

service.gst@fs.utc.com www.gst.com.cn